



32 Montefiore Road

Hove, BN3 6EP

Guide price £500,000

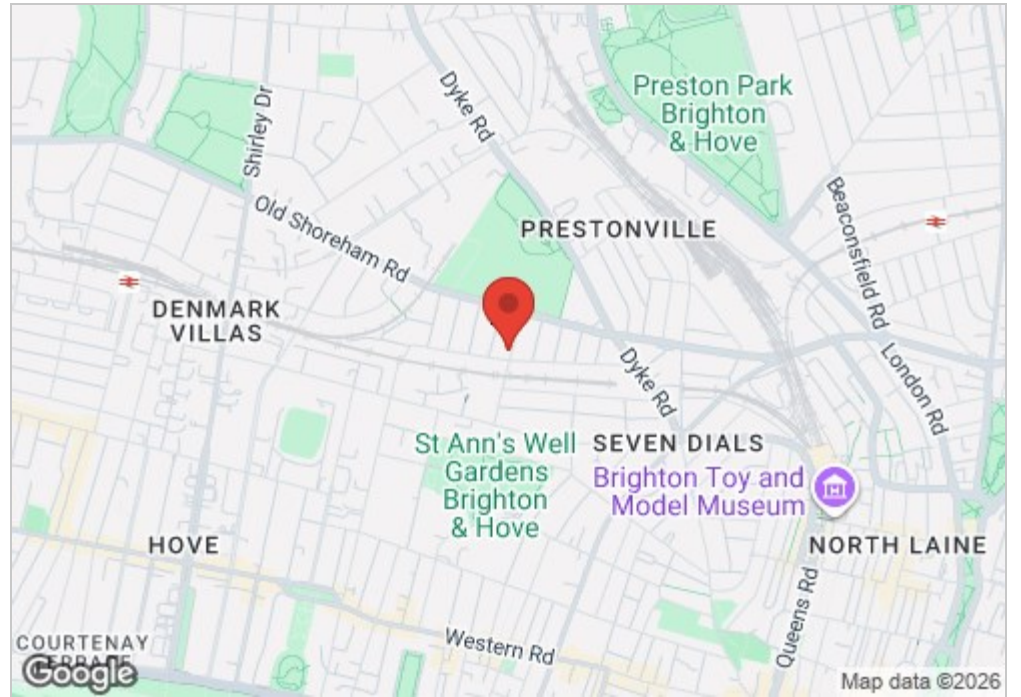
****Guide Price £500,000 to £550,000**

This stunning two-bedroom ground-floor mansion apartment spans an impressive 862 sq. ft., offering beautifully presented living space with its own private street entrance and a sun-drenched west-facing garden. Situated in the heart of Seven Dials, this home enjoys a prime location just a short stroll from independent coffee shops, trendy restaurants, and mainline train stations, making it perfect for city living.



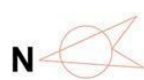
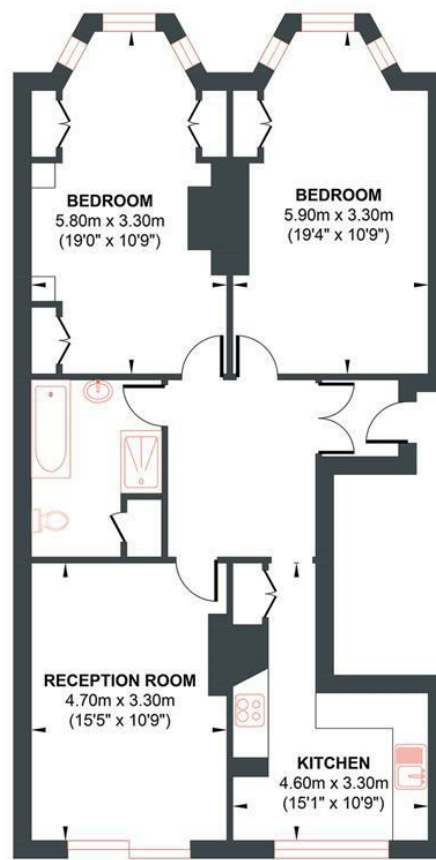
- Two Double Bedrooms
- West Facing Rear Garden
- Fully Fitted Separate Kitchen
- Large Bathroom
- Desirable Seven Dials Area
- Private Street Entrance
- Share Of Freehold
- West Facing Living Room
- Short Walk To Shops & Train Station
- Guide Price £550,000 to £600,000

Energy Efficiency Rating		
	Current	Potential
Very energy efficient - lower running costs		
(92 plus) A		
(81-91) B		
(69-80) C		
(55-68) D		
(39-54) E		
(21-38) F		
(1-20) G		
Not energy efficient - higher running costs		
		74
	21	
England & Wales		
EU Directive 2002/91/EC		



MONTEFIORE ROAD

Approx. Gross Internal Floor Area 80.12 sq m / 862.40 sq ft
Illustration for identification purposes only, measurements are approximate, not to scale.



GROUND FLOOR

Approximate Floor Area
862.40 sq ft
(80.12 sq m)



Foster & Co and their clients give notice that:
These sales particulars do not constitute any part of an offer of contract and are for guidance for prospective purchases only and should be not relied upon as a statement of fact.
We are not to be held responsible for material information that has not been given to us by our client at the time of marketing.
All measurements are approximate

